



The Oriental Ceramic Society of the Philippines

P.O. Box 80, Dasmariñas Village, Makati City, Metro Manila

Newsletter September 2007

Monthly Meeting & Lecture

Topic

The Effect of Clay Compositions & Morphology on Ceramic Firing

Date **Tuesday, September 25, 2007 at 6:00 p.m.**

Speaker **Barbara Davis**, an OCSP member with training in Civil and Geological Engineering

Place **Residence of Anna Pamplona**
1536 Carissa Street, Dasmariñas Village, Makati City

BARBARA DAVIS, a soil science specialist and OCSP member since 2006, will share with us her understanding of the effects of clay composition and morphology on the ceramic process. Barbara will take up the aspect of three clay groups, their MECHANICAL PROPERTIES and MINERAL COMPOSITION and how these affect CLAY SOIL BEHAVIOR.

She will examine why some clay deposits can be used for ceramics and why some cannot. She will then describe the changes that take place in the ware (earthenware, stoneware, and porcelain) at each stage of a firing process, and how the potter must tune the clay for the kiln atmosphere to produce the best possible ware. Where relevant, Barbara will use pieces from her own collection as examples.

Some Ceramic Examples for Discussion



Cambodian
Earthenware
jar, 16th
century (left)



Vietnamese
Earthenware
pot, 17th
century
(left).



Korean
celadon,
porcelain,
20th
century
(left).

Greek copy
of 500 BC
Earthenware
Ewer. (right)



Chinese
blue-&-
white
porcelain
plate,
17thcentury.
(right)



Chinese
blue-&-white
jar, early 20th
century.
Lignite in the
clay created
pot marks in
the glaze
during firing.
(right)



Barbara has had a varied career, spending five years working in the Mining Industry, fifteen years doing seismic-hazard applied research at University of California Lawrence Livermore National Laboratory (UC/LLNL), and now seven years as an IT project Manager at Asian Development Bank.

Kaolinite (left), Montmorillonite (center), Illite (right)



In graduate school at Purdue University, Barbara began her fascination with clay soils. This fascination was further enhanced when she worked on the Yucca Mountain Project at UC/LLNL and the Seismic Hazard Characterization of the Eastern United States. The former project included research on the use of Advanced Ceramics for long-term storage of spent nuclear fuel in an underground repository, and the latter project looked at ground motion attenuation of soil.

OCSF Committee Reports & Announcements Program

SPECIAL EXHIBITION & LAUNCHING OF THE CATALOG – October 2007

Thursday, October 11, 2007 – January 16, 2008

Opening of the Exhibition and the launching of the catalog has been rescheduled to October 11, 2007, Thursday, 6:00 p.m.

ZHANGZHOU WARE FOUND IN THE PHILIPPINES, “Swatow” Export Ceramics from Fujian in the 16th – 17th century

4th floor Dragon Gallery, Yuchengco Museum
RCBC Plaza, corner Ayala & Gil Puyat Avenues
Makati City, Metro Manila
Telephone: +632 889 1234

About the Exhibition:

- OCSF’s major project for 2007, jointly organized with the Yuchengco Museum, showcases 124 pieces of dishes, bowls, jars, covered boxes and jarlets under the curatorship of Rita C. Tan.
- The 13 pieces from the San Isidro shipwreck, the sunken Chinese junk discovered near the coast of Zambales in Luzon Island, in the collection of the National Museum of the Philippines will be exhibited for the first time.
- Other pieces are from the Villanueva collection, courtesy of the Ayala Museum, Kaisa, Heritage Center, Leandro and Cecilia Locsin, Tawalisi Inc., Ven Magbuhos, and mostly from the collections of OCSF members and friends.

About Zhangzhou Ware:

- Zhangzhou ware was formerly known by scholars and collectors as “Swatow” ware. In 1990s, some kilns in the Zhangzhou region in Fujian, a coastal province of southern China, were excavated. Following study in 1994 by experts, it was concluded that the group of kilns discovered was the production site of the very ware. Thus, Zhangzhou ware became recognized.
- The Zhangzhou potters copied extensively from Jingdezhen in Jiangxi province. However, their ingenuity of design with free and vibrant composition giving a warm

rustic quality is much admired.

- o The Exhibition presents a complete range of Zhangzhou ware types:
 - 1) blue-and-white ware being the core;
 - 2) a few other varieties of the monochrome ware with lightly incised designs;
 - 3) monochrome ware with slip decorations; and
 - 4) polychrome ware with overglaze enamels.

A GUIDED VIEWING OF THE EXHIBITION – October 2007

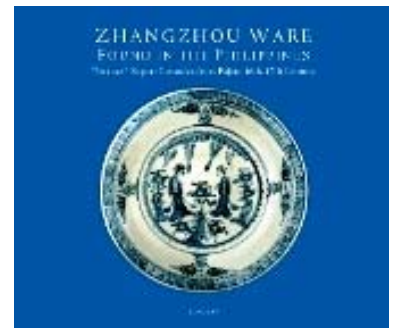
Saturday, October 20, 2007, 10:00 a.m. October Regular Meeting

A tour will be guided by Rita C. Tan, the curator of the exhibition, for OCSF members and friends. Please note that this viewing is in place of our October members' meeting.

Free for members, PHP 200.00 for guests, plus Museum admission fee for everyone.

THE EXHIBITION CATALOG – October 2007

**ZHANGZHOU WARE FOUND IN THE PHILIPPINES,
"Swatow" Export Ceramics from Fujian in the 16th – 17th
century**



Contents:

- o *Preface*
 - o *Introduction* (trading background) – by Rita C. Tan
 - o *Zhangzhou Ware Found in the Philippines - "Swatow" Export Ceramics from Fujian 16th-17th Century* – by Rita C. Tan
 - o *The Zhangzhou Kiln: A Review of Recent Archaeological and Research Trends in the People's Republic of China* – by Li Jian An
 - o *Catalog of 176 color illustrations*
 - o *The San Diego and San Isidro Shipwrecks: Reflections on Philippine Ceramic Trade on Swatow Wares in the 16th Century* – by Dr. Eusebio Dizon and Bobby Orillaneda
- Size 24 x 28 cm, 192 pages, 270 color plates, 6 maps and drawings.
 - Hard-bound (ISBN 978-971-93170-0-6) & Soft-bound (ISBN 978-971-93170-9-8).
 - Published by the Yuchengco Museum, the Oriental Ceramic Society of the Philippines, and ArtPostAsia, Singapore, October 2007.
 - **SPECIAL DISCOUNT RATE FOR OCSF MEMBERS & FRIENDS** for orders received before or on **October 11, 2007**: **PHP 1750.00** (hard cover); or **PHP 1500.00** (soft cover). After this date, regular price: PHP2500.00 or USD 55.00 (hard cover) and PHP 1900.00 or USD 40.00 (soft cover) will be applied.

IMPORTANT:

OCSF RESERVES 100 COPIES ONLY FOR PRE-SALE AT THE DISCOUNT RATE FOR ORDERS RECEIVED UP TO AND ON OCTOBER 11, 2007, THE OPENING OF THE EXHIBIT AND THE LAUNCHING OF THE CATALOG.

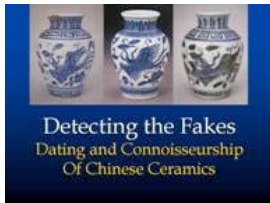
To avoid disappointment please indicate your interest soonest by contacting Yukie Sato at yukie.sato1@gmail.com or Mary Garlicki at mary@moorani.com.

For overseas shipment, there will be additional charges with following postage (by surface mail) from Singapore to respective countries:

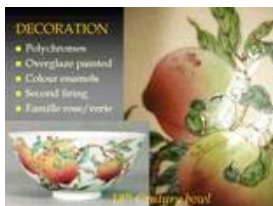
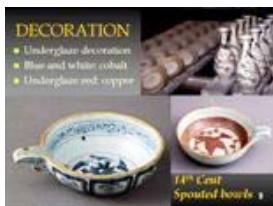
- *Hong Kong* - USD10.00 (3-5 weeks),
- *PRC, Taiwan, and Japan* – USD18.00 (6-8 weeks)
- *Europe* –USD22.00 (7-12 weeks) and *USA* – USD25.00 (8-11 weeks)

CD-Rom on the OCSP Lecture – from April 2007

**DETECTING THE FAKES:
Dating and Connoisseurship of Chinese Ceramics**



Professor Peter Lam, Director of the Art Museum, Chinese University of Hong Kong, fascinated the audience in April 2007 with his comprehensive and analytical approaches to the subject matter. With his generous support, we have been able to convert Professor Lam's lecture presentation into CDs available to members and friends.



CD comes in two types:
(A) Slide Show
(B) Static Slides



68 slides with the overview on the Chinese ceramic technology - its classification, decoration, formation, and production methodology - with guiding principles to ceramic structures and analysis – the entire aspects of ceramic traditions run through the Neolithic period to the modern age:

- o Chinese ceramics classified by way of production method, types, and decorations applied on wares, and
- o Forms, decorating techniques, types of decorations with glaze before and after the firing under the varying firing temperature, and types of clay
- o Analytical notes on each slide illustratively demonstrate on how, where, and what to look for in detecting the flaws in ceramics forged to copy various origins, periods, types, and classes.
- o A must guide for both amateurs and professionals.
- o CD in two types:
 - **Slide Show** (A) can be put on pause and reviewed individually.
 - **Static Slides** (B) for manual operation, suitable for close examination.
 - PHP250.00 each CD, PHP450.00 for a set of A & B. Each with the original text of the lecture summary by Professor Peter Lam.

ARE YOU INTERESTED IN LEARNING MORE ABOUT CHINESE CERAMICS?

Please contact Betty Go Roxas-Chua at +63 917 892 1679; bettygo@info.com.ph, or Dellie Yap at +63 917 530 5650, and specify the CD type you wish to order.

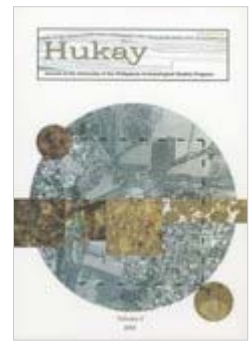
Hosting

Following the June meeting when we had Dr. Peter Bellwood, Mary Garlicki generously offered her home for the second time for the August meeting. We are most grateful to Mary and Riyaz Moorani for their generosity, especially when it is difficult to find a venue during rainy months. We are equally grateful to our cohosts: Chichi Laperal, Petteri Mäkitalo, Lourdes Montinola, Yukie Sato, Pinky and Werner Troesch, and Muchit Villazor. Thank you, everyone.

Library

OCSP HONORARY MEMBER DR. WILHELM G SOLHEIM II has donated two books to the Society's library. On behalf of the OCSP board and its members, we thank Professor Solheim for this contribution.

HUKAY: The Journal of the University of the Philippines, Archaeological Studies Program, 2005 Volume 8. 163 pages. (English)



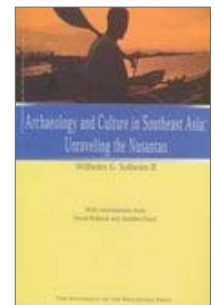
Contents

- *The Nagsabaran Shell Midden Site: A Soil Micromorphological Approach* – Armand Salvador B. Mijares
- *The Earliest Bone Tools in the Philippines: Patterns and Issues* – Sharon Fiel R. Teodosio
- *In Dogged Pursuit: A Reassessment of the Dog's Domestication and Social Incorporation* – Janine Therese Ochoa
- *Can You Tell Me How the Pot Fell?* – Jack G L Medrana
- *Basketry Weaves and Bau-Malay Earthenware Pottery in Southeast Asia* - Wilhelm G. Solheim II
- *Where Organization is Supposedly Least Likely to Exist: Battlefield Archaeology* – Andrea Malaya Ragragio

Books reviewed in this volume

- *First Farmers: The Origins of Agricultural Societies* by Peter Bellwood. 2005. Oxford: Blackwell Publishing - Reviewed by Wilhelm G. Solheim II.
- *The Forest, Source of Life: The Kelabit of Sarawak* by Monica Janowski. 2003. London: British Museum- Reviewed by Taj Vitales.
- *Lost at Sea: The Strange Route of the Lena Shoal Junk* by Franck Goddio, Monique Crick, Peter Lam, Stacey Pierson, and Rosemary Scott. 2002. London: Periplus - Reviewed by Andrea Malaya Ragragio.
- *Environmental Archaeology: Approaches, Techniques and Applications* by Keith Wilkinson and Chris Stevens. 2003. Gloucestershire: Tempus Publishing - Reviewed by Vito Hernandez.
- *Out of Eden: The Peopling of the World* by Stephen Oppenheimer. 2003. London: Constable and Robinson - Reviewed by Michael James B Herrera.

ARCHAEOLOGY AND CULTURE IN SOUTHEAST ASIA: Unraveling the Nusantao by Solheim II, Wilhelm G. University of the Philippines Press. 2006. Quezon City. 317 pp. (English)



Contents:

- *A Proposed Prehistoric Maritime Network from Southeast Asia to Korea & Japan*
- *The Son Vi and Hoabinhian in Japan*
- *The Four Lobes of the Nusantao Maritime Trading Network*
- *The Nusantao Maritime Trading and Communication Network*
- *What Does the Nusantao Encompass?*
- *The Archaeological Survey in Papua, Halmahara, and Ternate, Indonesia*
- *Conclusions*

Contributions

- *Sa Huynh-Kalanay: Analysis of the Prehistoric Decorated Earthenware of South Sulawesi in an Island Southeast Asian Context* - by Ambika Flavel
- *A Test of Ambika Flavel's Results with an Enlarged Sa Huynh-Kalanay Data Set* - by David Bulbeck

THE PUBLICATIONS OF THE OCSP LIBRARY are available for viewing at any time. If you wish to borrow any of the publications, arrangements can also be made. The library is housed at the home of Mary Garlicki (62 Real Street, Urdaneta Village). Contact her at : mary@moorani.com or call her mobile, 0917 836-1405 to arrange for browsing the library.

Newsletter

The announcement of the Zhangzhou Ware Exhibition in the July Newsletter has invited an interesting inquiry from a reader in Hong Kong regarding his collection. Please see the new interaction under [Views & Letters](#).

OCSP Newsletters are uploaded every month in the Southeast Asian Ceramic Society's (SEACS) website: http://www.seaceramic.org.sg/foreign_news/index.html.

The closing date for contributions to the October Newsletter is **September 29, 2007**. Please send news and your comments to Yukie Sato, the editor, at yukie.sato1@gmail.com.

Views & Letters

Letter to the editor

TK NGIEM, Hong Kong (2007-08-19, ngiam.tk@gmail.com)

"I just started to collect Swatow ware and I learned that you have a Swatow ware exhibition in September 2007. I am residing in Hong Kong and I would like to know to whom I can consult on Swatow ware as I have a very unusual Swatow dish recently acquired in Indonesia.

Have you seen this piece in the Philippines? The size is 40 cm."



Some of the images of his "Swatow dish" forwarded by Mr. TK Ngiam, Hong Kong

Comments

RITA C. TAN, OCSP President, Manila (2007-08-22, ritatan@pltdsl.net)

Dear Mr. Ngium,

"No, I haven't encountered a piece similar to yours, which is indeed very unusual. But the color of the blue, dots of white slips, and even the floral design on the cavetto are seen on Zhangzhou monochromes with slip decorations. The serpents like dragons are of Zhangzhou type though they rarely appear on monochromes. The base seems all right too. I was just thrown off by the pairs of stamped squares that look more like chops to me on the rim, something unseen before.

If I've a chance I'd like to show it to Li Jian An, the archaeologist who excavated the kilns in Zhangzhou. ...the only known piece similar to this one is in the collection of Topkapi Saray Museum in Istanbul, Turkey."

- We welcome readers' comments on Mr. Ngium's Zhangzhou piece. (Editor)

Local Event

Lecture

AN INTIMATE PORTRAIT OF JUAN LUNA - by Ambeth Ocampo

September 15, 2007, Saturday, 10:00 a.m. –12:00 noon (Rescheduled from August 18, 2007)

The 150th birth anniversary of the National Hero, Juan Luna, is celebrated in October 2007. The NCCA Chairman, Professor of History, author, and OCSF member, Prof. Ambeth Ocampo, promises an interesting take on this National Hero. The talk will deal with Luna as an artist in the context of the emergence of the Filipino nation, as well as his human side.

Ablaza Hall, National Art Gallery, National Museum,
P. Burgos Street, Manila

Fee: HP75.00 students, PHP200.00 Museum Foundation members, PHP400.00 non-members

The Museum Foundation of the Philippines

For inquiries or reservations, call Museum Foundation of the Philippines at +63 928 503 9392 or call +632 722-9073.

The National Art Gallery has recently opened its doors to the public, and the Spolarium can be viewed after a long absence.

International Event

Exhibitions & conference

THE POTTER'S MARK: TEA CERAMICS AND THEIR MAKERS

Until February 24, 2008

Japanese ceramics were among the first in Asia to display impressed or incised marks relating to their makers. Such marks, emerging in the late 16th century on vessels made for use in the Japanese tea ceremony, indicate keen interest in the maker's identity and skill.

Marks began as "seals of approval" impressed by patrons who commissioned tea wares, such as the imprint of a large square seal - possibly owned by a Kyoto tea master- on a Bizen ware water jar. By the mid 17th century, potters such as the Kyoto master Ninsei used elegant oval seals to identify their products. Ideally, a famous person wrote the calligraphy for the seal. At the end of the 17th century, the Kyoto potter Ogata Kenzan introduced a new style by inscribing his own studio name in large brush strokes, sometimes even as part of the vessel's decoration.

Marks used at the Seto kilns, which were sponsored by a prominent warrior house, emphasized the prestigious ware rather than individual makers. Some Seto tea-leaf storage jars bore the name of special local clay, "*Sobokai*," incised on the base. Other tea jars bore stamped marks resembling the ciphers used as official signatures by warriors.

Freer Gallery of Art
Smithsonian Institution
Washington, DC
www.asia.si.edu

THE FIRST EMPEROR: China's Terracotta Army

September 13, 2007 - April 6, 2008

The exhibition will explore the life and legacy of China's First Emperor, Qin Shihuangdi, together with archaeology of his tomb complex and the new discoveries.

The British Museum
Great Russell Street,
London

Email: boxoffice@thebritishmuseum.ac.uk

ASIAN ART IN LONDON – 10th Anniversary

November 1 – 10, 2007

London’s leading Asian Art dealers hold a series of selling exhibitions in their galleries. Details can be found on www.asianartinlondon.com.

Ceramic Matters - News from **Korea** via London

OCTOPUS HELPS TO UNEARTH ANCIENT POTTERY - Yahoo! News UK, July 24, 2007

South Korean archaeologists said Tuesday that they have discovered a sunken vessel packed with ancient pottery, in an exploration prompted by an octopus that attached its suckers to a plate.

The 12th-century wooden vessel was found buried in mud flats off Taeon, southwest of Seoul, the National Maritime Museum said. More than 2,000 pieces of 12th century bowls, plates and other types of pottery were heaped inside the 7.7 meter (25-foot) vessel, it said. "I believe the pottery might have been made for royals and the ruling elite of the Koryo Dynasty," which ruled the peninsula from 916 to 1392, museum head Seong Nack-Jun told reporters. The exploration began in early June after shards of celadon pieces were found attached to the suckers of several webfoot octopuses which a fisherman had netted.

The museum has since retrieved about 540 pieces, which were scattered around the vessel. Several shipwrecks filled with relics including ancient pottery have been found along the west coast, where many kilns were established in the Koryo era.

OCTOPUS UNEARTH 900-YEAR-OLD HIDDEN TREASURE

The Daily Mail 24 hours, London, July 24, 2007



Some of the 30 bowls from the 12th century discovered by the octopus. (left)



The bowls are carefully restored to their former glory after nine centuries underwater. (left)

OCSF BOARD (2007-2008)	OFFICER POSITIONS	COMMITTEE CHAIRMANSHIP
Rita C. Tan	President	Exhibition
Yukie Sato	1st Vice President	Program, Newsletter Editor
Trinidad Osteria	2nd Vice President, Recording Secretary	-
Dellie Yap	Treasurer	-
Betty Go Roxas-Chua	Corresponding Secretary	Logistics
Mary Garlicki	-	Membership, Library
Connie C. Pascal	-	Hosting
Pilar B. Martinez-Miranda	-	Ex-Officio