



The Oriental Ceramic Society of the Philippines

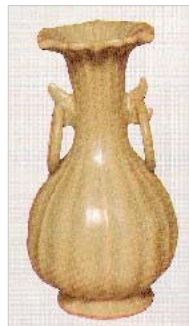
P.O. BOX 80, DASMARIÑAS VILLAGE, MAKATI, METRO MANILA

Newsletter May 2007

Monthly Meeting: A Guided Tour

VIEWING

The Roberto T. Villanueva Collection of Chinese and Southeast Asian Trade Wares



Yuan, 14th century celadon *yu-hu-ch'un*, H 16.5cm (left), Yuan, 14th century blue-and-white ewer, H 22 cm (center), and Yuan, 14th century ewer painted with underglaze red chrysanthemum, H 11cm, (right).

Date: **Saturday, May 19, 2007, 10:00 a.m.**

Place: **Ayala Museum, Exhibition Hall, 4th floor**
Makati Avenue corner De La Rosa Street
Greenbelt Park, Ayala Center, Makati City
Telephone: +63 2 757 2787

Speaker: **Rita C. Tan**
Curator of the exhibition on *the Roberto T. Villanueva Collection* and President of the Oriental Ceramic Society of the Philippines

The focus of this remarkable collection is the comprehensive range of its Chinese trade ware spanning a millennium from the 9th to the 19th centuries. Mostly from famous kilns in Jiangxi, Zhejiang, Jiangxi, Fujian, and Guangdong provinces. Thai and Vietnamese ceramics are represented as well in the collection.

Rita C. Tan, whose expertise and passion for Chinese trade ceramics is well known to us, will guide members to appreciate the diversified and much celebrated ceramic traditions from the Tang to the Qing dynasties. We will learn what to look for and how to appreciate potters' skills, profound glaze quality, and forms that claimed stylistic developments in each period.

A specially guided viewing of the collection will examine 450 pieces on display from the collection.

OCSP Committee Reports & Announcements

Program

A SPECIAL LECTURE AT THE APRIL MEETING –April 2007
April 30, 2007

DETECTING THE FAKES: Dating and Connoisseurship of Chinese Ceramics

Professor Peter Lam, whose extensive knowledge and abundance of experience on Chinese ceramics, fascinated the packed audience at the Alliance Française' auditorium on Monday, 30 April, 2007.



Authenticating.

Prof. Lam's methodical approaches to detection of the fakes were innovative and analytical, yet personal. He began with describing a classification of ceramics by way of production method, types, and decorations applied on wares. He elaborated on techniques of making forms and relationships of glaze effects with the firing temperature and types of clay. On the subject of detection, he suggested that to correctly identify Chinese ceramics we should build our own memory database as a major tool, which he called "a 3-Dimensional chart": X - types and class of wares (monochromes, polychromes, celadon, etc), Y - date and chronology (Neolithic, Han, Tang, Song, and Qing, etc), and Z - kiln, ware, provenance (Jingdezhen, Longquan, Ding, Guangdong, Zhangzhou, Cizhou, etc) all of which are

essential to assess the object. A number of scientific laboratory examinations are possible in dating the objects, but Prof. Lam greatly encouraged us to extend our observation beyond the naked eye with the help of an inexpensive loupe and pen-light in order to study the surface of wares for its glaze effects, patina, earth encrustation, detecting and feeling for the signs of restorations.



Audience asorbing

Through his meticulously illustrated PowerPoint presentation, Prof. Lam conveyed the message that we need to practice the "FOUR MUSTS" to readily detect the fakes:

- 1) Examine and handle more REAL objects;
- 2) Read more reliable books, especially illustrated ones;
- 3) Think and compare;
- 4) Apply what you know into practice: see whether it is true with actual pieces, and construct your memory database chart.

The lecture was most instructive and stimulating. Many of us went home reflecting on re-examining our own pieces displayed on shelves or packed in boxes at home.

REGULAR MEETING – June 2007
Wednesday, June 20, 2007, 6:00 p.m.

Lecturer: **PETER BELLWOOD**, Professor of Archaeology, the Archaeology and Anthropology Department of the Australian National University, Canberra.
Secretary-General of the Indo-Pacific Prehistory Association (IPPA).

Topic: ***THE ORIGINS OF THE FILIPINO POPULATION***

Venue: Residence of Mary Garlicki, 62 Real Street, Urdaneta Village, Makati

An excavation site at Savidug, Sabtang Island, Batanes



Professor Bellwood has been conducting archaeological fieldwork for prehistoric research across many areas including Polynesia, Indonesia, Vietnam and the Philippines. On his return from his project site in Batanes, he will share with us his research findings on excavations at Savidug, Sabtang Island, Batanes.

Membership

Membership Fees

This is a second reminder to all Regular Members; the Annual Membership dues have been increased to PHP 1,200.00 (Single Membership) and PHP 1,800.00 (Couples Membership). With this mailing of the newsletter, we are enclosing an Invoice for Membership dues reflecting the increased fees. The invoice is sent only to those members whose fees are still outstanding. In line with the increase in membership fees, the Society's joining fee for new members is increased to PHP 1000.00. These fees are now in effect.

Please be reminded that guests are welcome at all our meetings, but are charged an entry fee of PHP 300.00. This policy has been implemented since March 2006.

Withdrawal of Membership

Christopher Bell-Knight withdrew his membership from the OCSP in April 2007 because of his work. He has been with the OCSP since April 2005. We wish him all the best.

Library

In April 2007, an exhibition catalog was donated by Professor Peter Y. K. Lam, Director, Art Museum, the Chinese University of Hong Kong, and our speaker for April 2007.

SHIWAN WARES



Pottery making in Shiwan has a long history, as the town, 20 km southwest of Guanzhou, produces its own pottery clay. It is one of the earliest pottery-producing areas in China. Shiwan wares are known also for their lively and charming figurines of pottery sculpture. In 1528 guilds were established, each for a particular category of ware, such as the guild of teapots, of flowerpots, of antiques, of white glaze ware, etc., and ceramic production became highly specialized. As a result of such specialization and much competition, the potters were strongly motivated to improve the quality of their products. The making of artistic pottery was greatly

enhanced and what is commonly known as "Shiwan Wares" today, apart from domestic earthen wares, refers mostly to this type of artistic pottery.



Incense burner, Ming, H 26 cm

Size: 25.2 X 20.2 cm, 118 Pages with 233 color illustrations. Published by Fung Ping Shan Museum, University of Hong Kong, Hong Kong, 1979.

Newsletter

OCSP's Newsletters 2005, 2006, and 2007 can be accessed from the Website of the Southeast Asian Ceramic Society (SEACS): http://www.seaceramic.org.sg/foreign_news/index.html

Please send your contributions or information to Yukie Sato, Newsletter Editor, at ranesbi@attglobal.net or +63 918 918 8729. Deadline for the June issue is **June 1, 2007**.

International Events

Ceramic Matters

THE PACIFIC ROUTE OF CERAMIC TRADE:

the Commercial Flow of Oriental Ceramics between Asia and Latin America

by Etsuko Miyata Rodriguez and Ritsuko Yajima

Etsuko Miyata Rodriguez, a researcher who became known to some of our members in 2001-2002 when she was Visiting Professor of Archaeology at the University of the Philippines, sent us her paper, at the request of the OCSP Newsletter, on her study conducted in Mexico City together with Ritsuko Yajima, curator, Machida Municipal Museum, Japan. The report is based on their findings in the Zócalo area, Mexico City in 2006.

The excavated ceramics, which will be discussed in a series in this newsletter, are classified into the following categories in chronological order:

1. Jingdezhen wares from Late Jiajing (1522-1566) to early Wan Li (1573-1620) dynasties, early galleon trade period
2. Jingdezhen bowls, the third quarter of the 16th century
3. Jingdezhen wares, the late 16th – early 17th centuries
4. Jingdezhen wares, 1610 – 40s
5. Zhangzhou wares, so called 'Swatow wares,' first half of the 17th century
6. Jingdezhen ware, Kangxi period (1662-1722)
7. 18th century Chinese ceramics



1. Dish from Templo Mayor - (far left),
2. Dish from Templo Mayor - (left),
4. Dish from Templo Mayor - (right)
6. Bowl from Calle de Licenciado Verda - (far right).

Introduction

The galleon trade, during Spain's colonial rule in the Philippines, marked the period of increasing commercial contacts between Europe and Asia, Africa, and America. The exchange of goods helped to connect diverse continents as Portugal and Spain expanded their power in Asia.

The study of trade ceramics since the 16th century is limited due to a lack of information. Some excavations of city sites have been conducted in Japan -- Nagasaki and Sakai, and some sites in Southeast Asian cities such as Banten, Indonesia as well as wreck sites. Thus, the reconstruction of the history of the period relies heavily on written documents.

The Manila Acapulco trade route, along which Asian goods were sent to New Spain (Mexico), and Peruvian silver was brought from Mexico to Asia via the Philippines, played an important role in connecting the American continent with Asia not only in terms of their economies but also their cultures. How were the Asian goods collected in Manila, and then exported to Mexico? Also, how were

the goods distributed, and how did this distribution change in the course of time? The objective of this study was to clarify these questions through the research of excavated ceramic pieces in Mexico City.

Galleon Trade

The first direct contact with European power in the Philippine Islands was in 1521, when Magellan reached Cebu. After the 15th century, Portugal and Spain, which both had advanced navigation technology, competed to monopolize commercial, political and religious influence overseas, especially in Asia. Both countries searched for the route to Asia in order to acquire cloves and nutmegs. As a result repeated military clashes between these two countries occurred in various places in Asia. In 1565, the Spanish army led by Miguel Lopez de Legazpi conquered Cebu. In the same year trade between the Philippines and New Spain began, and the Spaniards started to send galleons loaded with spices and other Asian goods to New Spain from the Philippines. Chinese ships from Southern China came to the Philippines every year and brought silk products, porcelains, spices, iron works, furniture, and many other goods. Indian cotton was brought via Malacca, spices were brought from the Moluccas, armour and sulphurs from Japan. Thus, from 1572 when Manila was established, the city became the entrepôt of Asian goods, as well as the political and commercial centre of Spain's colony in Asia. From New Spain, silver, tobacco, various plants and vegetables of American origin came to Cavite Bay, along with many priests. This Manila Galleon Trade connecting Manila and Acapulco created an exchange of people and materials that continued until 1815.

The Excavated District and its Geographical Character

The Chinese ceramics which the authors have researched are excavated from the Zocalo area located in the centre of Mexico City. All the pieces excavated from the 1970s up to now are kept in the Museo del Templo Mayor.

This district was called Tenochtitlán before the Spanish conquest, and was originally several islands floating in Texcoco Lake connected with other large lakes. The Aztecs connected these islands to create a large urban space. In the centre of this space was Templo Mayor, an important religious temple for the Aztec culture, and the spiritual foundation of the people. Later, the lake, which functioned as a natural fortification, was refilled and new buildings and churches were built by the Spaniards as the capital of New Spain. Mexico City has not changed its basic spatial structure from the 16th century until today.

The excavations carried out up to now are located in the Templo Mayor site -- the Cathedral, Donceles Street, Justo Sierra Street, Calle de Moneda, Calle de Licenciado Verdad, currently located between the House of the Archbishop and Museo del Templo Mayor, and part of the National Palace. The Templo Mayor site is where many artefacts from the pre-Columbian period were excavated but at the same time, artefacts from the colonial period were also excavated since this district had always been the centre of Mexico City, and played an important role as colonial America's political and economic centre during the colonial period.

In Plaza Mayor, which is close to the Templo Mayor site, a market was installed where many small shops owned by the Spaniards, craft shops of Indios selling Chinese silks and other Asian goods, together with ceramics brought by the Manila Galleon, existed throughout the 17th century. This entire district suffered a disastrous flood in 1629, and later the market was reconstructed with wood materials. In 1656, a fire broke out, which destroyed the whole market. The market was again reconstructed with stone materials. However the flood that occurred in 1629 has caused great difficulty for the archaeologists to distinguish the cultural layers. – To be continued in the coming issues.

(The research was funded in 2006 by *Kajima Bijutsu Zaidan*, and all the pieces excavated belong to Museo del Templo Mayor. Etsuko Miyata Rodriguez is currently a Ph.D. candidate at the Department of History/Universidad de Santiago de Compostela, and living in Barcelona; etsukocarlos@yahoo.com)

OCSP BOARD (2007-2008)

BOARD POSITIONS

COMMITTEE CHAIRPERSONS

Rita C. Tan	President	-
Yukie Sato	1 st Vice President	Program, Newsletter Editor
Trinidad Osteria	2 nd Vice President, Recording Secretary	-
Dellie Yap	Treasurer	-
Betty Go Roxas-Chua	Corresponding Secretary	Logistics
Mary Garlicki	-	Membership, Library
Connie C. Pascal	-	Hosting
Pilar B. Martinez-Miranda	-	Ex-Officio